

PART OF THE NE.1/4, OF SECTION 2, T.5N., R.2W., S.L.B. & M.
RIVERBEND TOWNHOMES PHASE 3

547

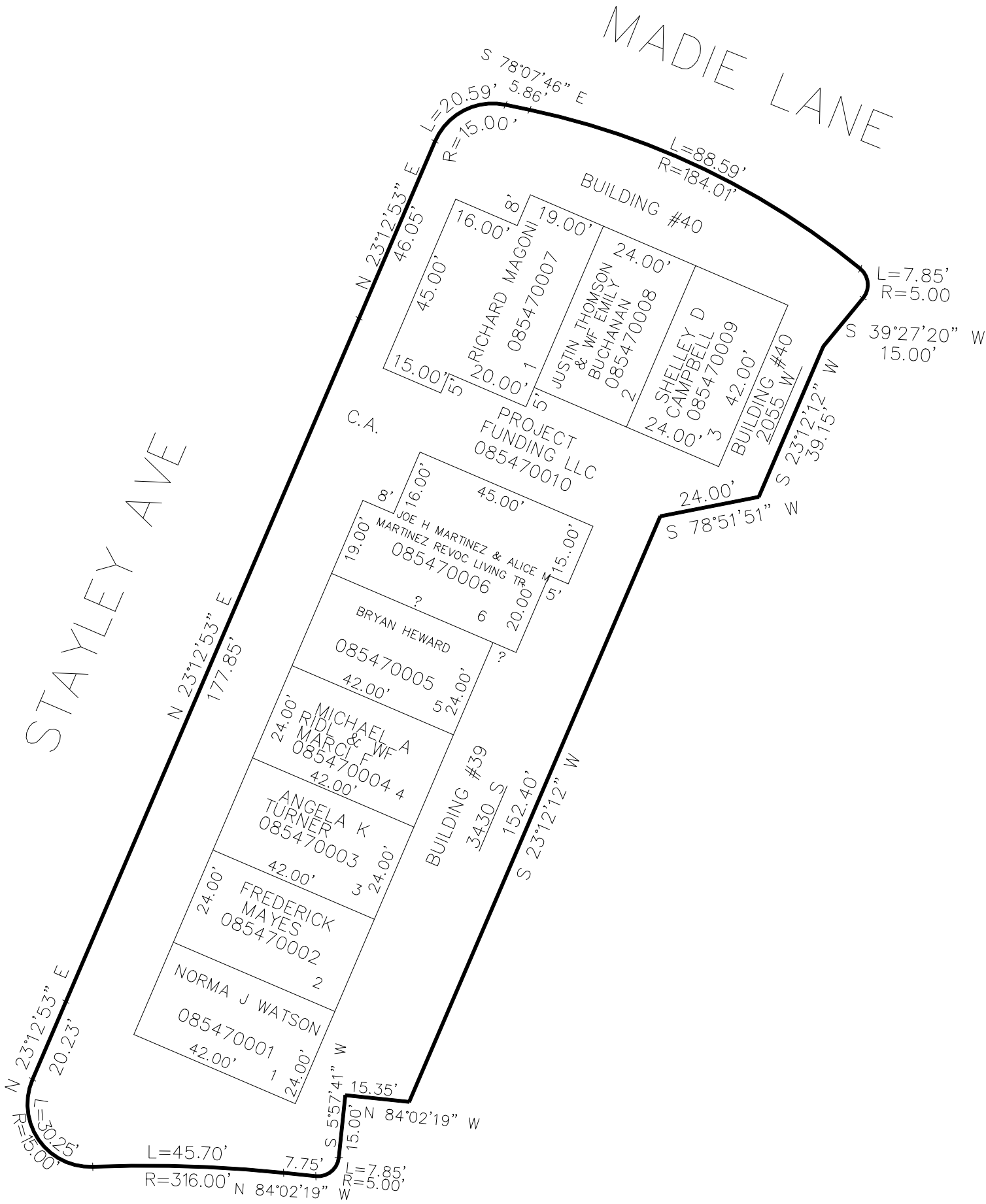
TAXING UNIT: 323

IN WEST HAVEN CITY
SCALE 1" = 30'

SEE PAGE 469

SEE PAGE 492

SEE PAGE 6



SEE PAGE 6

10' UTILITY & DRAINAGE EASEMENTS EACH
SIDE OF PROPERTY LINES AS INDICATED
BY DASHED LINES EXCEPT AS OTHERWISE
SHOWN.

FOR COMPLETE ENG DATA SEE
ORIGINAL DEDICATION PLAT IN
BOOK 75, PAGE 95 OF RECORDS.